



STANDARD COLOUR CARD

Henry Ford used to say 'You can have any colour you like, as long as it's black'. Before the 1970's, asphalt manufacturers had to say the same thing as pavements could only be coloured by coatings which often suffered durability problems. Over the last 40 years red asphalt & macadam have been popular and have been achieved using pigments such as Procter Johnson's Asphalt Red for colouring conventional bitumen. More recently has seen the emergence of synthetic binders which can be pigmented to provide a huge variety of colours.

We currently promote a standard range of pigments for use in clear binder applications and are able to offer bespoke colours on demand. Most of the shades can be achieved with relatively low dosage rates. Typically dosage is 1-3% by weight of the total mix design.

The colours represented are dosed at 1.5% in Repsol S-100 P clear binder.

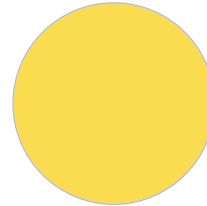
The colours illustrated are intended as a guide only.

This information whether verbal, in writing or by way of trials is given in good faith but without warranty and this also applies where proprietary rights of third parties are involved. Our advice does not release you from the obligation to verify the information currently provided - especially that contained in our safety data and technical data sheets - and to test our products as to their suitability for the intended processes and uses. The application, use and processing of our products and the products manufactured by you on the basis of our technical advice are beyond our control and, therefore, entirely your own responsibility.

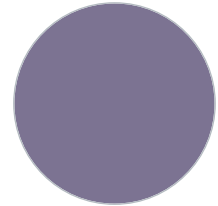
Our products are sold in accordance with the current version of our Conditions of Sale.



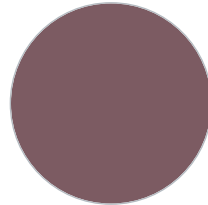
Green
PJ GRN10



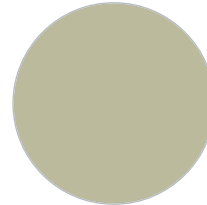
Lemon
PJ 933



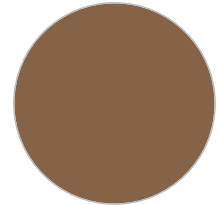
Purple
PJ 543



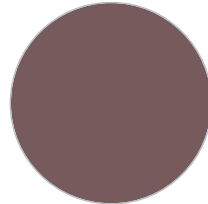
Plum
PJ 180



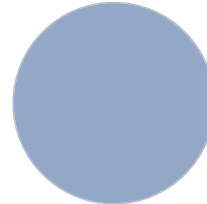
Taupe
PJ 7069



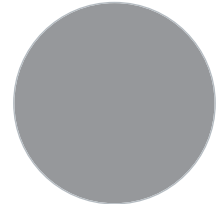
Tan
PJ 610



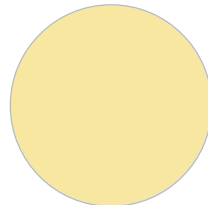
Chocolate
PJ 663



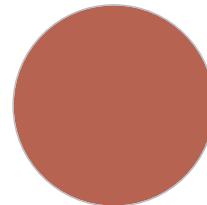
Powder Blue
PJ 554



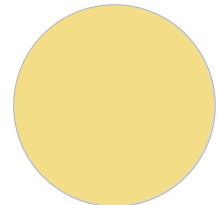
Grey
PJ 795



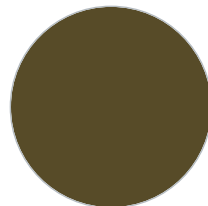
Cream
PJ 249



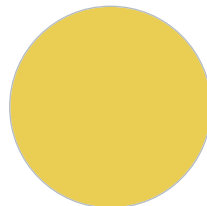
Bright Red
PJ 126



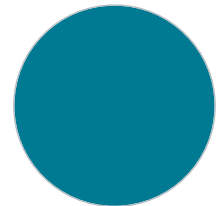
Light Buff
PJ 245



Moss
PJ GRN48



Buff
PJ 244



Aqua
PJ 537